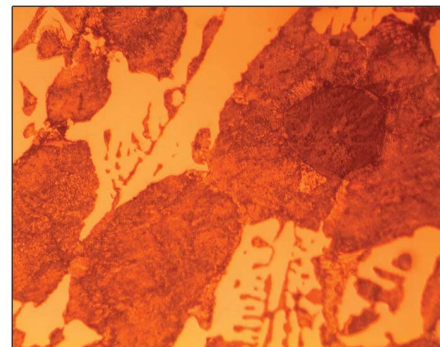
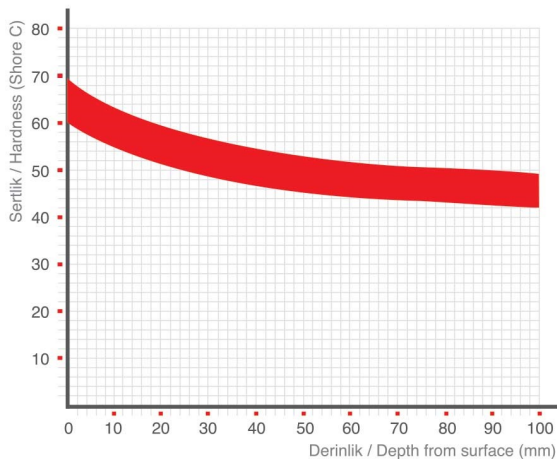


ARMED MAXIMA



Spherical graphite in increasing amounts and primary cementite that inversely decreases from the surface of the body are observed within the perlitic matrix towards the center. Mechanical strength and toughness increase as one penetrates towards the axis of the roll and at the trunnions, while a good wear strength is obtained in the useful area on the body, where caliber is opened. The performance of the ARMED Maxima rod rolls is successful in the medium rolling mills and in the section rolls.

| HARDNESS RANGE (SHC) | | C | Si | Mn | Cr | Ni | Mo | Cu | TENSILE STRENGTH (N/mm ²) | BENDING STRENGTH (N/mm ²) |
|----------------------|----|---------|---------|---------|---------|---------|---------|----|---------------------------------------|---------------------------------------|
| 60 | 65 | 3,3-3,7 | 1,2-1,8 | 0,1-0,6 | 0,5-1,5 | 2,0-2,7 | 0,3-0,6 | - | 450-700 | 800-1100 |
| 62 | 68 | 3,3-3,7 | 1,2-1,8 | 0,1-0,6 | 0,5-1,5 | 2,0-2,7 | 0,3-0,6 | - | 450-700 | 800-1100 |
| 63 | 70 | 3,3-3,7 | 1,2-1,8 | 0,1-0,6 | 0,5-1,5 | 2,0-2,7 | 0,3-0,6 | - | 450-700 | 800-1100 |
| 65 | 71 | 3,3-3,7 | 1,2-1,8 | 0,1-0,6 | 0,5-1,5 | 2,0-2,7 | 0,3-0,6 | - | 300-450 | 500-800 |



500X