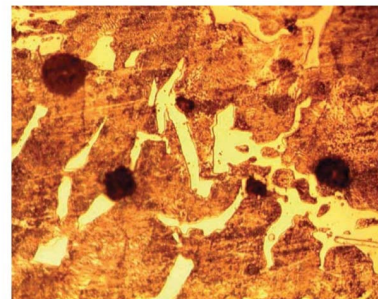
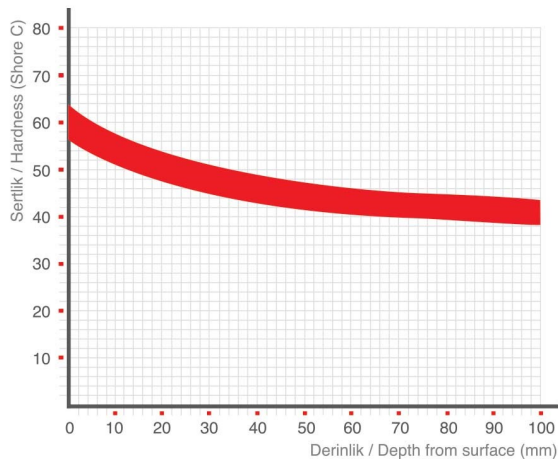


# ARMED OPTIMA



Our alloys that contain Copper up to 1,5 % for being able to create a price advantage to our customers are also present and these may be proposed for suitable rolling mills, when required. Copper up to 1,5 % may be used in lieu of Nickel as a replenishment.

PRODUCT CODE	HARDNESS RANGE (SHC)		C	Si	Mn	Cr	Ni	Mo	Cu	TENSILE STRENGTH (N/mm2)	BENDING STRENGTH (N/mm2)
	58	63								450-650	800-1100
ARMED Optima	58	63	3,1-3,7	1,5-2,0	0,1-0,6	0,5-1,5	0,5-1,5	0,3-0,6	0,5-1,0	450-650	800-1100
ARMED Optima	62	68	3,1-3,7	1,5-2,0	0,1-0,6	0,5-1,5	0,5-1,5	0,3-0,6	0,5-1,0	450-650	800-1100



500X