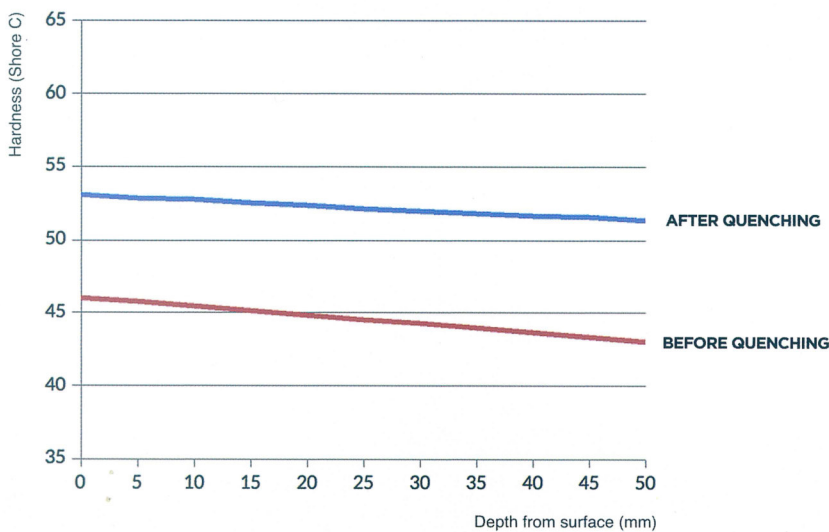


# ARMITE GQ

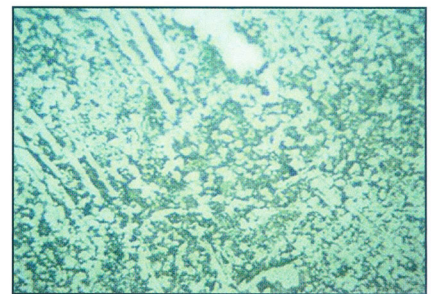


ARMITE GQ is of hypereutectoid steel group metallurgically. It is the product developed in the result of our R&D studies. The hardness increase of 5 to 7 Rockwell C (HRC) provided by means of normalization heat treatment and quenching method ensures that roll performance increases extraordinary.

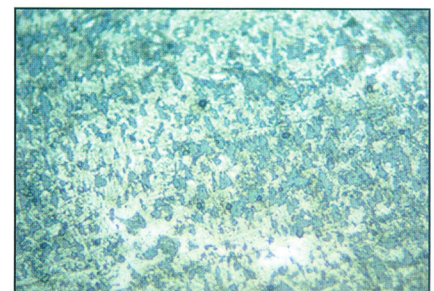
HARDNESS RANGE (SHC)		C	Si	Mn	Cr	Ni	Mo	Cu	TENSILE STRENGTH (N/mm <sup>2</sup> )	BENDING STRENGTH (N/mm <sup>2</sup> )
50	55	1,4-2,0	0,3-0,8	0,5-1,5	0,5-2,0	0,5-1,7	0,2-0,6	-	500-750	750-1100
55	60	1,4-2,0	0,3-0,8	0,5-1,5	0,5-2,0	0,5-1,7	0,2-0,6	-	500-750	750-1100
60	65	1,4-2,0	0,3-0,8	0,5-1,5	0,5-2,0	0,5-1,7	0,2-0,6	-	500-750	750-1100



BEFORE QUENCHING



400X



AFTER QUENCHING

400X