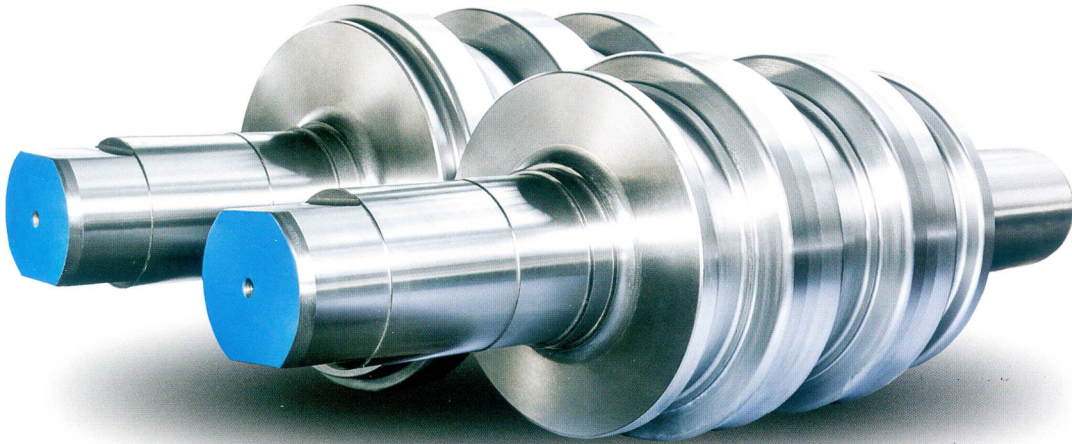
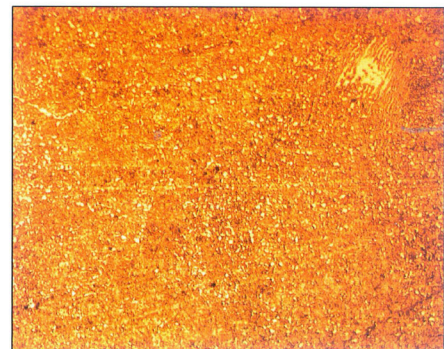
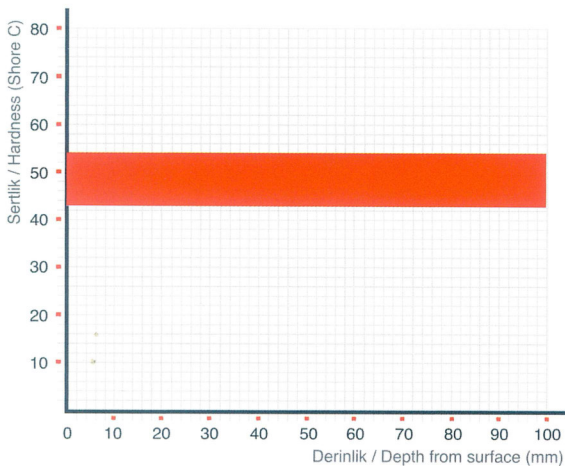


ARMITE MAXIMA



Nickel, molybdenum and chrome alloyed high performance rolls. The material consist of spheroidal carbides well distributed in the fine pearlitic matrix. Therefore ARMITE Maxima has better fire crack resistance and wear resistance than ARMITE Optima. The hardness and the wear resistance is almost constant along the cross-section of the body.

HARDNESS RANGE (SHC)		C	Si	Mn	Cr	Ni	Mo	Cu	TENSILE STRENGTH (N/mm2)	BENDING STRENGTH (N/mm2)
42	47	1,4-2,0	0,3-0,8	1,0-1,5	1,0-2,0	0,5-1,7	0,3-0,6	-	500-750	750-1100
47	52	1,4-2,0	0,3-0,8	1,0-1,5	1,0-2,0	0,5-1,7	0,3-0,6	-	500-750	750-1100



500X