

## 4. Modified Semi-HSS Rolls

### Performance Index

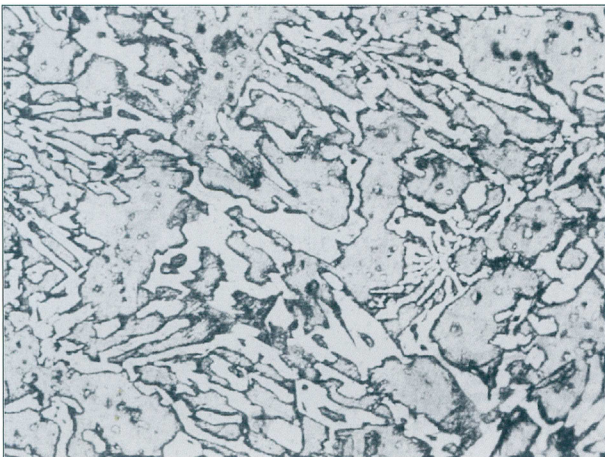
Tensile strength	Hardness(HSD)	Impact Toughness (J/cm <sup>2</sup> )
700-900	70-85	6-15

### Chemical Analysis

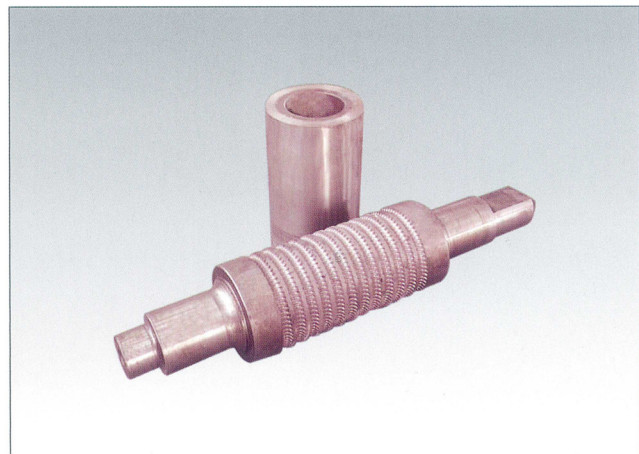
C	Si	Mn	Cr	Ni	Mo	V	B	W	Nb
0.45-3.3	0.15-1.5	0.15-1.5	4-27	1.0-3.5	0.5-2.0	0.2-5	0.2-1.5	0.2-5	0.2-3

### Steel Output Reference Table

The Finished Stand	Steel Output of Single Groove(T)	Sliting Stand and Pre-sliting Stand	Steel Output of Single Groove(T)
Φ12 Finished Product	200-300	Φ12 Three - Sliting	1200-3500
Φ14 Finished Product	250-400	Φ14 Three - Sliting	1400-3500



Microstructure



Modified Semi-HSS Rolls