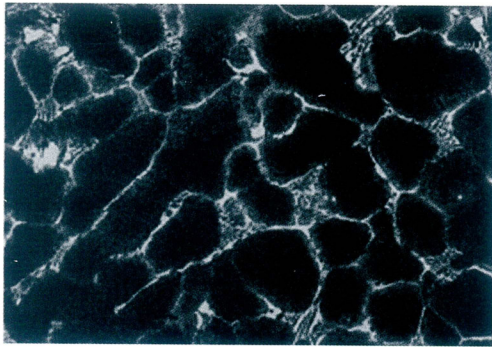


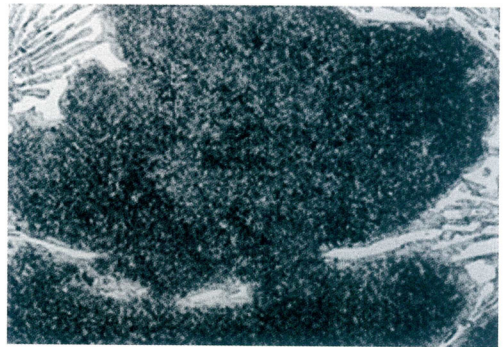
### 3. HiCr Steel Rolls

#### Chemistry and Surface Hardness

Classification	Chemistry								Barrel Hardness(HSD)
	C	Si	Mn	P	S	Cr	Ni	Mo	
HiCr steel	1.00-1.80	0.40-1.00	0.50-1.00	≤0.030	≤0.025	8.00-15.0	0.50-1.50	1.50-4.50	70-85



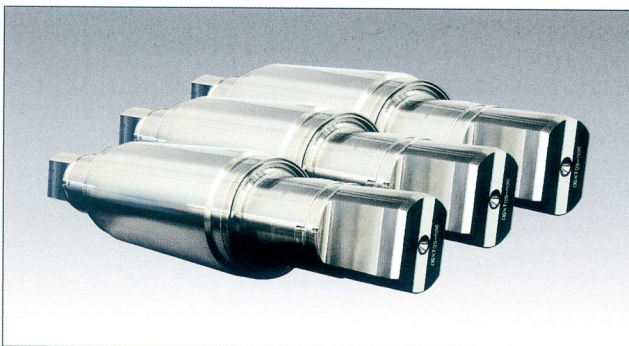
Microstructure



Microstructure

#### Mechanical Property

Neck Hardness(HSD)	35-45
Tensile Strength(N/mm <sup>2</sup> )	≥ 350



HiCr Steel Rolls



HiCr Steel Rolls